

Product Technical Statement

Product Description

The WetWall Panel system comprises a prefinished, high gloss, moisture resistant internal wall lining with specific mouldings and jointings. The panel is a 5 layered Aluminium Composite Panel (ACP), comprising an inner polyethylene core encased in an aluminium sheet and then completely coated by a polyester coating. Proprietary mouldings and jointings are available in extruded PVC or aluminium.

Scope

The WetWall Panel system is suitable for use where easy cleaning and moisture impermeable surfaces are required. This includes food preparation areas, bathrooms and laundries.

Other conditions or Limitations

Installation must be in accordance with installation material. The WetWall Panel system needs to be earthed whenever there is an electrical switch or socket. It is strongly recommended that a registered electrician carry out this work. The WetWall Panel system is yet to be assessed for use in close proximity to heat sources such as cooking appliances.

Technical Literature

For a copy of the current technical/installation information go to www.plywoodcity.co.nz

NZ Building Code

The WetWall Panel system complies with the following performance clauses.

Performance clause	Evidence
Clause B1 Structure: Performance B1.3.3(e) WetWall Panel system will meet this requirement	Reliance on compliance with relevant E3 (internal moisture) performance clauses
Clause E3 Internal Moisture: Performance clause: E3.3.4, E3.3.5 & E3.3.6 WetWall Panel system will contribute to meeting this requirement	Use of aluminium as external claddings, combined with the polyethylene core which is a thermoplastic that is also used for extruding as bottles, tanks etc
Clause B2 Durability: Performance B2.3.1(b) not less than 15 years WetWall Panel system will meet this requirement	Aluminium panels are used as exterior panels and the durability requirement (no less than 15 years) is met.
Clause G3 Food preparation & prevention of contamination: Performance clauses G3.3.2(a) WetWall Panel system will meet this requirement	as for E3

NZ Electrical (Safety) Regulations 2010

In order to meet the requirements of the NZ Electrical (Safety) Regulations 2010, it is essential that, when necessary, panels are earthed correctly. In the case of commercial installations, a registered electrician is required to earth the panels.

In the case of domestic installations, an owner can earth the panels, but unless they are experienced in electrical work we would still recommend that the earthing be carried out by a registered electrician

Electrical Earthing-Safety Message

When installing Wetwall Panel it is important to earth the panels whenever there is an electrical switch or socket.

Depending on the type of joiners you use there are two options when earthing the panels.

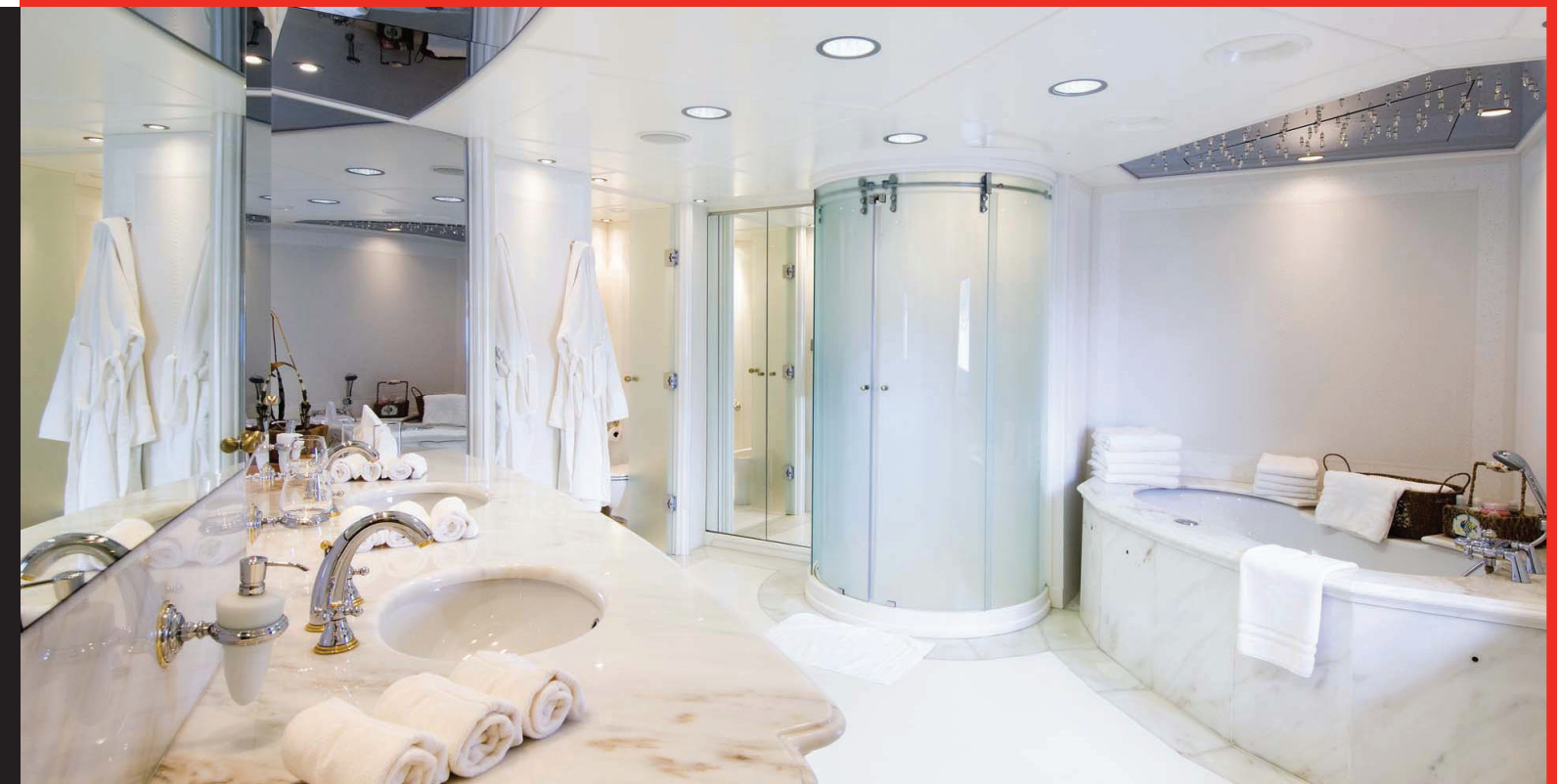
1. When using plastic or silicon mouldings you would need to earth each sheet that could possibly come into contact with power.

Basically if there are any wires behind the sheet on either side of the wall or if there is a power socket in the sheet itself. You will need to earth it using a crimp lug. The crimp lug will be easily hidden behind

the skirting, scotias or just to the side of the penetration for the power socket, making sure that the cover plate hides it. A crimp lug is a simple screw connector that allows you to connect a bonding wire which will feed back to earth to the board itself and will earth both the face side and the backside at the same time.

2. When using aluminium mouldings you may only need to use one crimp lug for each area where all the boards are forming one circuit. You must confirm this with an electrician on-site.

WetWall-Panel WARRANTY: Plywood City Ltd (PWC) will promptly furnish without charge a replacement panel or refund the purchase price thereof, at PWC's option, for any panel which is shown to be defectively manufactured as long as installation is in accordance with installation instructions, within the first 7 Years since date of purchase. Proof of purchase will need to be supplied. This warranty shall not apply where the incorrect cleaning products have been used and have caused the surface to deteriorate. The warranty shall not apply to any loss or consequential loss suffered through or resulting from defects caused by faulty manufacture of materials. All warranties other than those specified by PWC are hereby excluded and all conditions, obligations and liabilities are hereby excluded. Nothing in the warranty, however, shall be construed as affecting the rights, the buyer may have under the Consumer Guarantees Act, Building Code or any other.

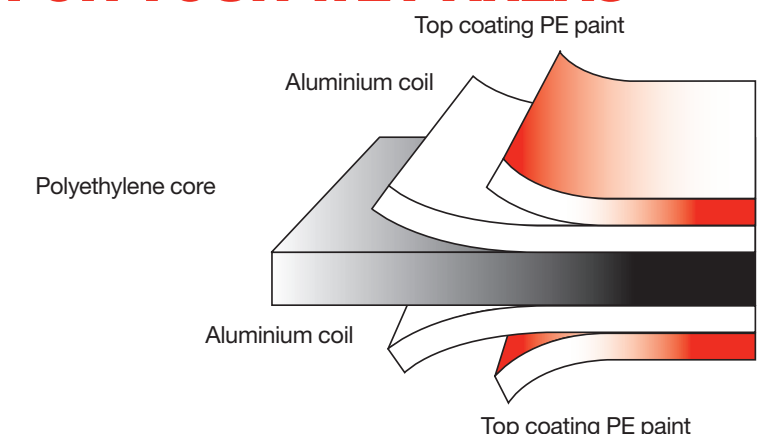


WetWall Panel is the new pre finished easy to install wet wall lining. With a long lasting clean finish, WetWall Panel is stylish looking, cost effective and combines the durability and strength of Aluminium Composite Panel (ACP), with a 0.35mm alluminium skin on both painted faces.

5 LAYERS OF PROTECTION FOR YOUR WET AREAS

- Kitchens
- Bathrooms
- Shower linings
- Lunchrooms and lunch bars
- Glossy ceilings
- Home, commercial and public toilet areas
- All food preparation areas and easy clean up areas

WetWall Panel with its stylish, easy clean finish will keep that bathroom, toilet, kitchen, laundry or any utility area looking fresh, stylish and clean for years to come.



Available in:

White, Black, and Silver.

Custom colours can be indented on request.

Fire rated panels can be indented on request.

4mm plastic jointers, corners and caps are available.

Aluminium jointers can be made to order with custom colours.

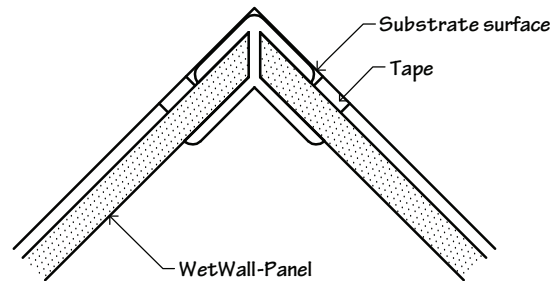
Sheet sizes: All 4mm
2400x1200, 2400x900



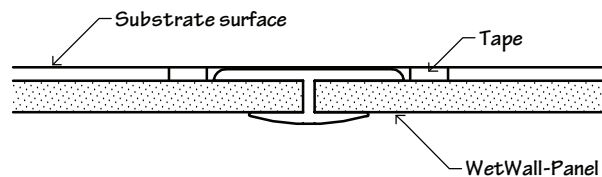
WetWall Panel

Stylish WetWall Panelling made Easy & Affordable

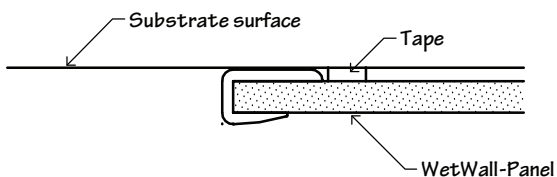
Wet Wall Panel Installation Instructions



INTERNAL / EXTERNAL CORNER SCALE: 1:1



H-JOINTER SCALE: 1:1



END CAP SCALE: 1:1

Plan Your Project

Read the information in this brochure. Assemble all the tools you need as listed on the page overleaf. Take the time to plan and think about the appropriate size to use on each wall so that the joints fall in the best place.

Prepare Materials and Work Area

Ensure the surface the WetWall Panel is being installed on is dry clean and solid. WetWall Panel may be glued onto an existing substrate such as fibre cement board or directly onto studs. When fixing WetWall Panel, clean the area that you are fixing to with Holdfast® 696 surface activator.

Cutting & Measure

When cutting WetWall Panel always cut with the presented FACE UP and use a fine tooth saw at an angle less than 30 degrees to the sheet. Once cut to size, practice dry placing the sheet to the wall to ensure it fits prior to gluing.

Installing WetWall Panel

Remove protective masking from the back of the sheet before fixing to the wall. Apply a continuous bead of Holdfast Fixall 220 MS using a caulking gun and Very High Bond (VHB) tape to the wall see diagrams over the page. Carefully press the WetWall-Panel against the adhesives and wall to join.

Ensure each panel is fixed to the wall with the masking arrows facing the same way. Remove masking after one hour of being fixed to the wall. Allow 24 hours for the adhesives to fully cure.

When installing in or around electrical sockets or switches the WetWall Panel will need to be earthed. See safety message on the last page for instructions.

When using PVC or aluminium Joiners in wet area applications ensure that all sheet edges have been sealed into joiners with an appropriate wet area silicone sealant.

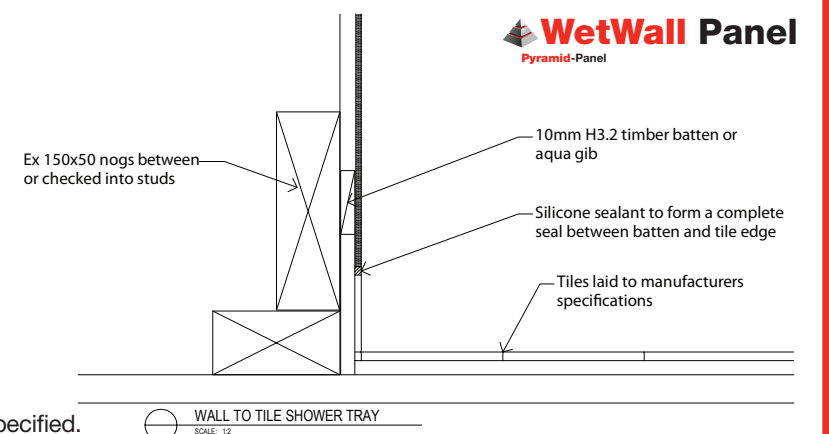
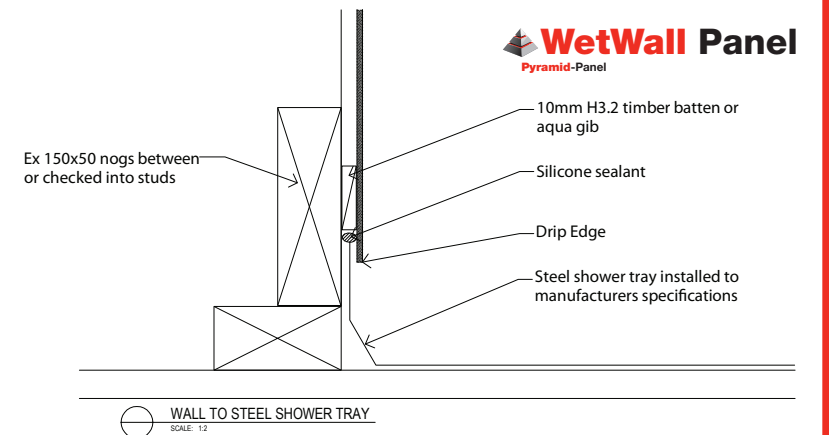
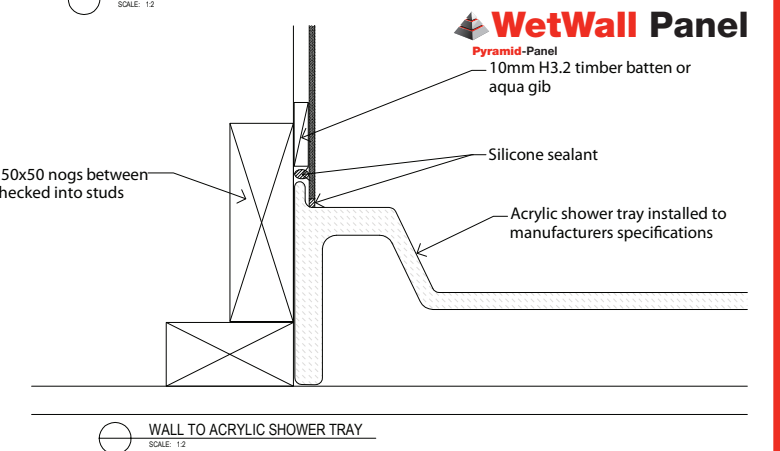
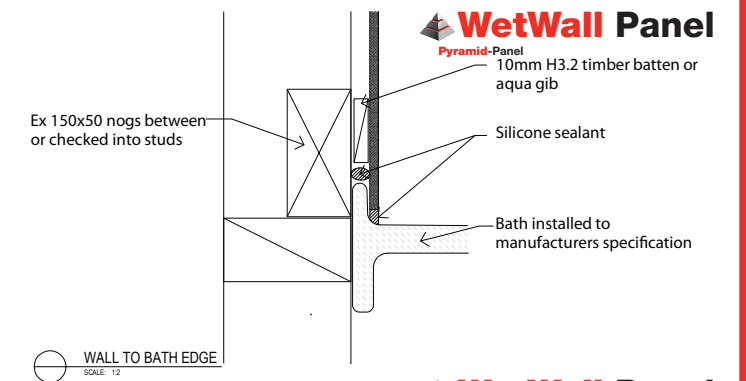
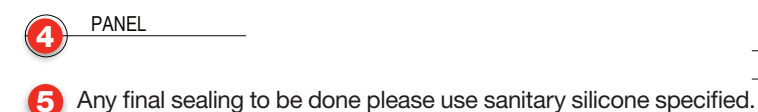
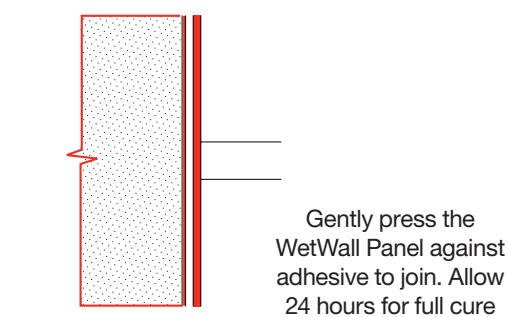
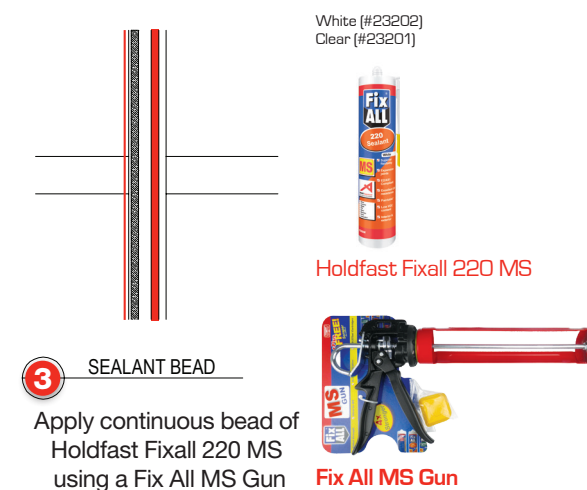
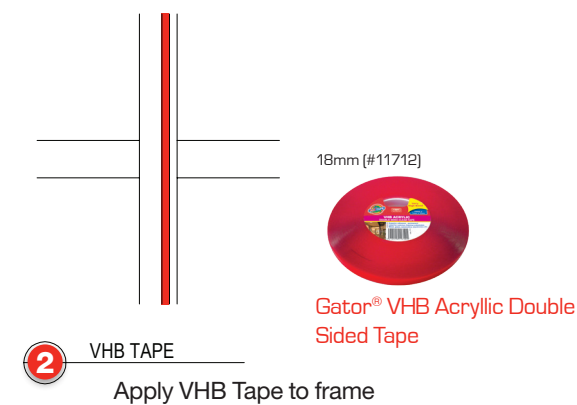
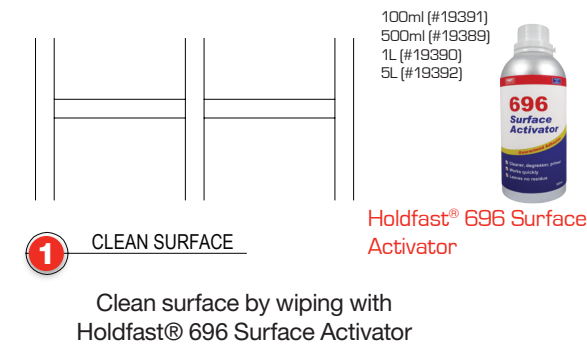
When installing in a shower situation ensure the diagrams on the opposite page are followed. Seal at the bottom and behind the drip edge with Holdfast Fixall 220 MS.

Cleaning & Maintenance

The WetWall-Panel high gloss surface is easy to clean with a cloth and a **non-abrasive** detergent. Dirt, grime and soap scum is easily removed. Conduct regular inspections for scratches and dents for repair.

Joints sealants need to be regularly inspected and repaired if required. Please note abrasive cleaners should not be used as they may react with aluminium substrate if exposed.

HOW TO FIX WetWall Panel Guarantee a safe, secure bond!



Tools and materials for a professional finish

Table Use this to plan out your job.

Pencil To mark before cutting and gluing your panel.

Carpenters Square To ensure that you rule straight lines before you cut.

Tape Measure Remember the golden rule ... Measure twice, cut once!

Drill & Hole Cutting Bit Use this to cut holes for your taps and shower fittings.

Caulking Gun To apply the silicone and panel glue.

Wall Board Adhesive Holdfast Fixall MS220 and VHB Tape.

Spirit Level To ensure that the sheets line up correctly. It is important that all sheets are installed level.

Silicone Use only 100% silicone and ensure that it is designed for use in a Bathroom or Kitchen.

We recommend GORILLA® Kitchen & Bathroom for exposed joints.

Masking Tape To protect your panels and ensure a clean finish when applying silicone.

Fine Toothed Saw Cut the panels FACE UP. Keep angle of saw less than 30 degrees to the sheet.